



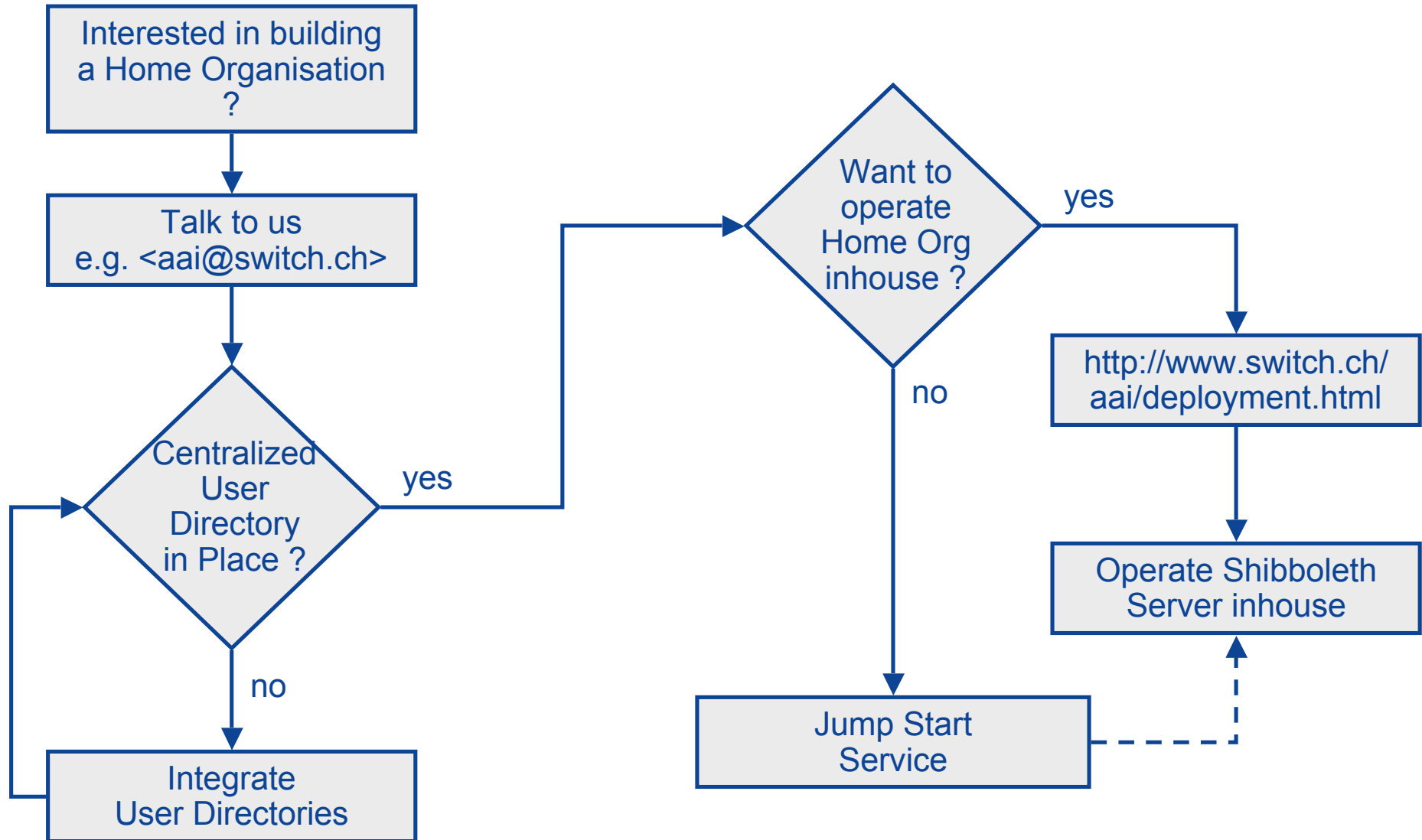
SWITCH

The Swiss Education & Research Network

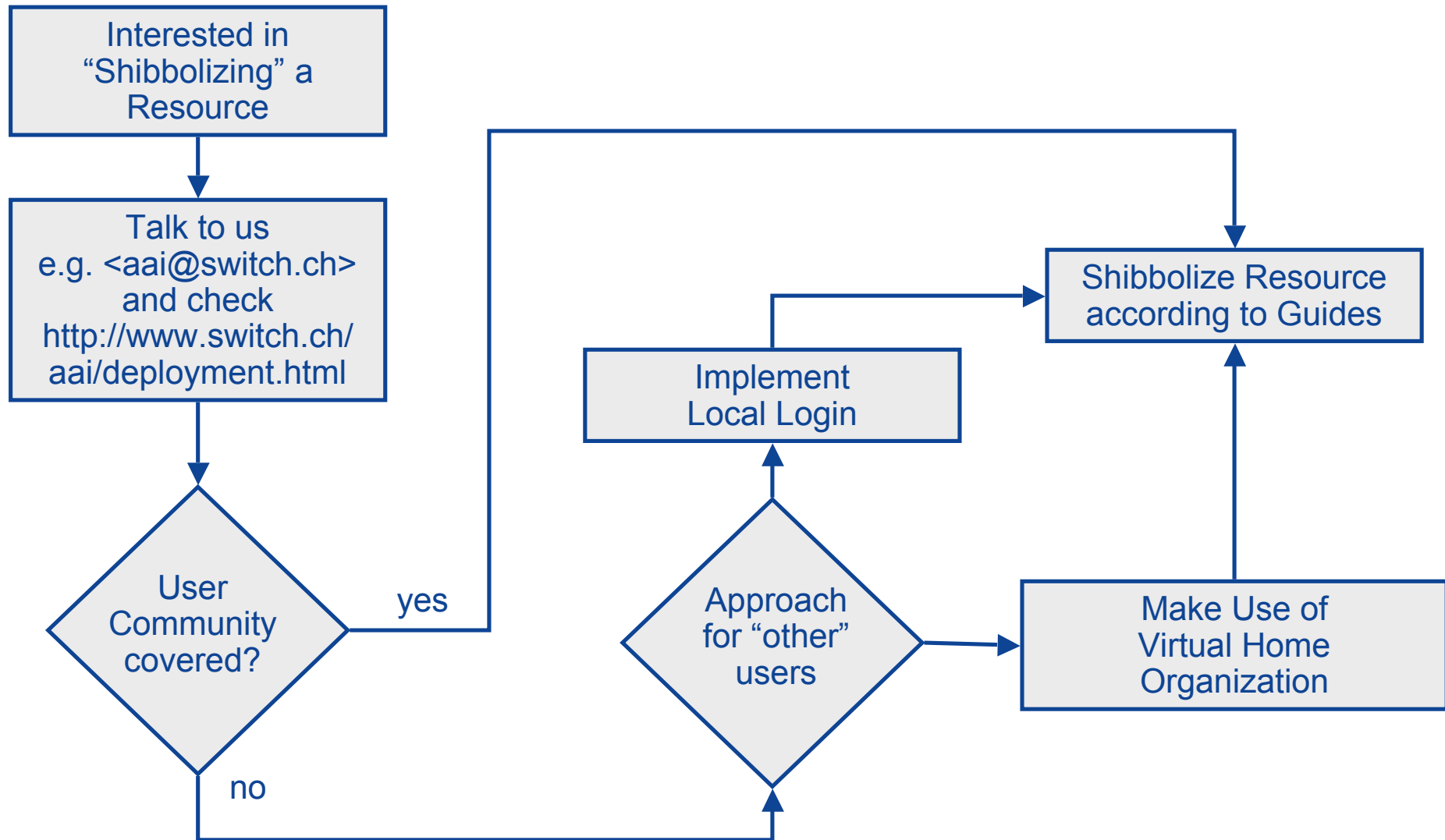
How to get involved

Ueli Kienholz, <kienholz@switch.ch>

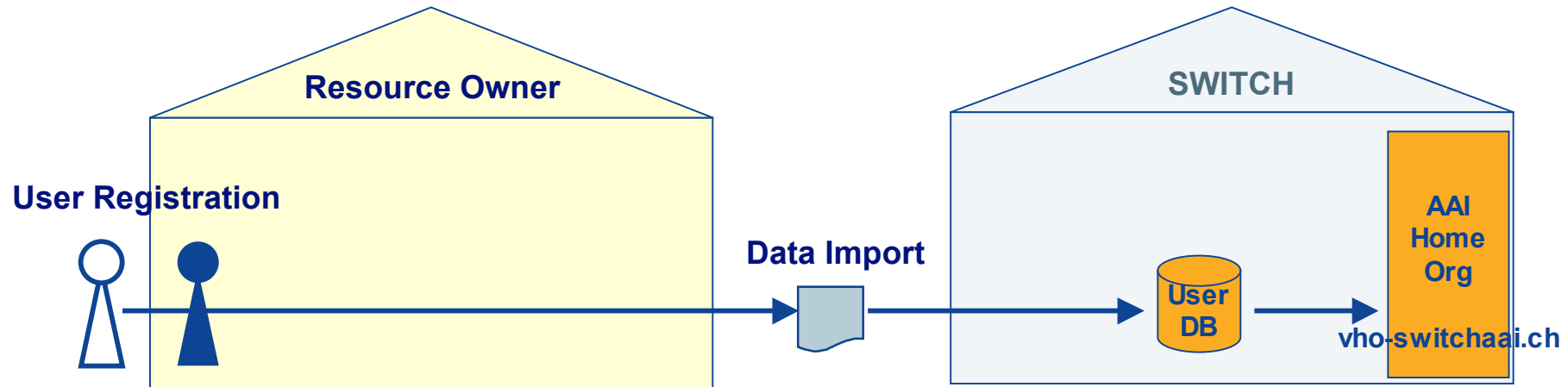
Building a Home Org



„Shibbolizing“ a Resource



Virtual Home Organization Service



AAI Virtual Home Organization

Customers	Resource Owners
Description	<ul style="list-style-type: none"> • Home Organization service provided by SWITCH for individuals that are not registered at a University • File-based bulk import of user data provided by Resource Owner • Web-based interface for password administration by User
Customer's Responsibility	<ul style="list-style-type: none"> • Accuracy of user data • Complying with AAI policy • Final VHO policy is currently defined
SWITCH's Responsibility	<ul style="list-style-type: none"> • Complying with AAI policy

Our support and services

□ <http://www.switch.ch/aai>

□ aai@switch.ch

□ Ueli Kienholz	044 268 15 42
Thomas Lenggenhager	41
Patrik Schnellmann	59
Valéry Tschopp	44
Group Number	20

□ On-site presentation of the AAI project

□ A couple of days on-site support for integrating resources

□ Virtual Home Organization Service

□ Jump Start Service

❑ SWITCHaai Website:

<http://www.switch.ch/aai>

❑ Shibboleth:

<http://shibboleth.internet2.edu/>

❑ Shibboleth Demo:

<http://www.switch.ch/aai/demo>

❑ Attribute Specification:

http://www.switch.ch/aai/docs/AAI_Attr_Specs.pdf